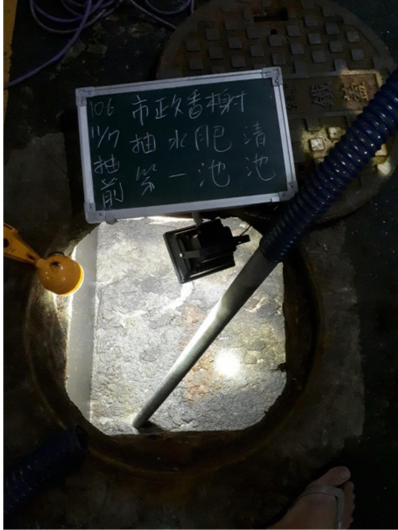


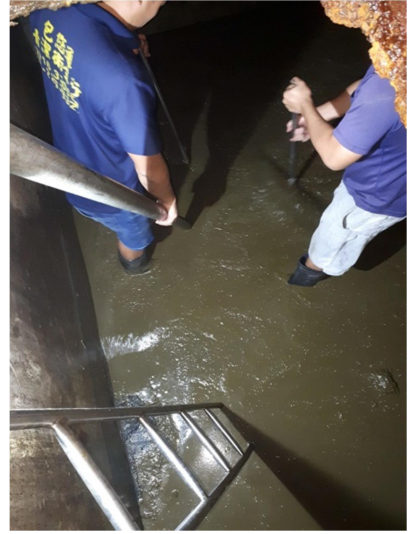
市政香榭

污水系統各池抽取污泥及清池施作照片 106/11/24

第一池



第二池



第三池

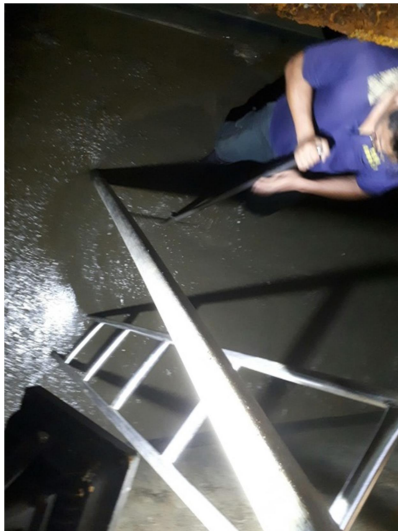
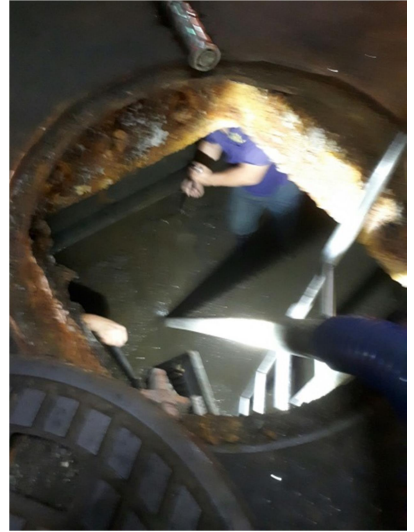
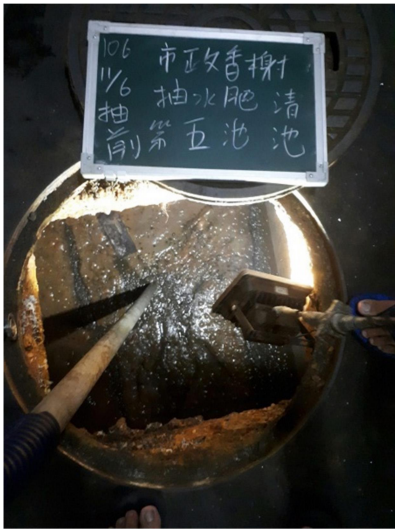




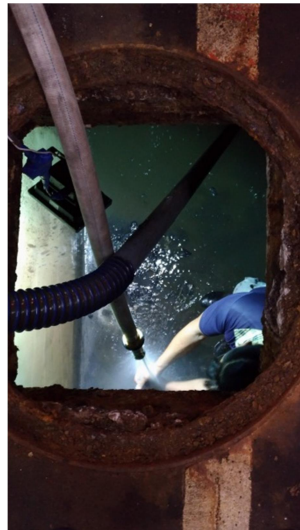
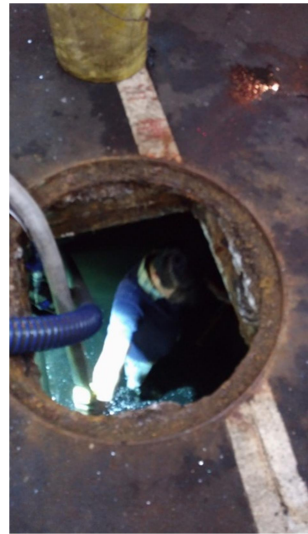
第四池



第五池



第六池

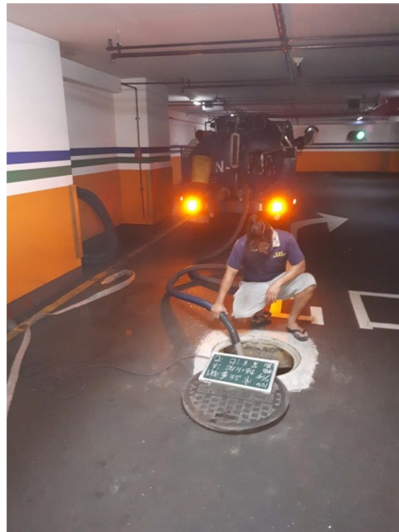


第七池

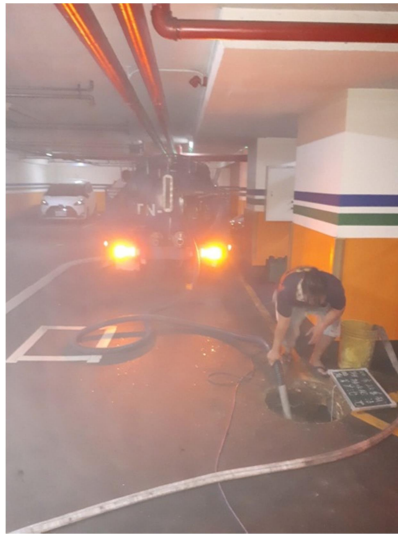




第八池



第九池



第十池

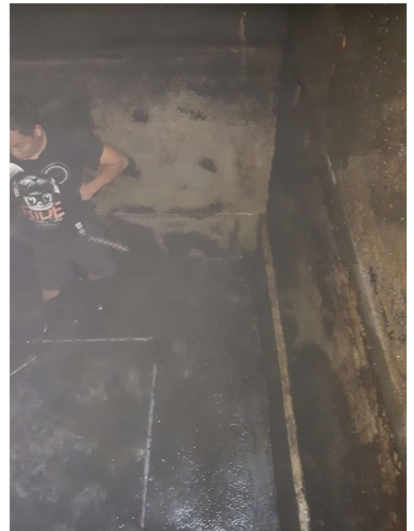
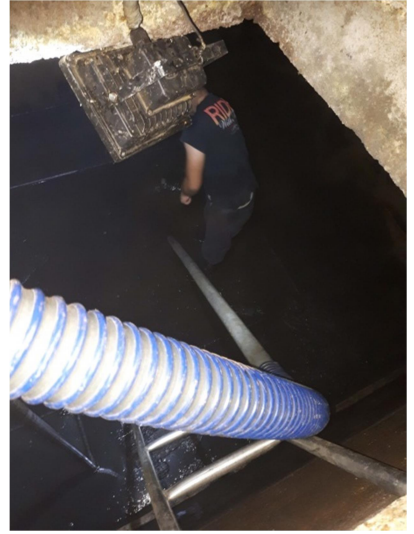




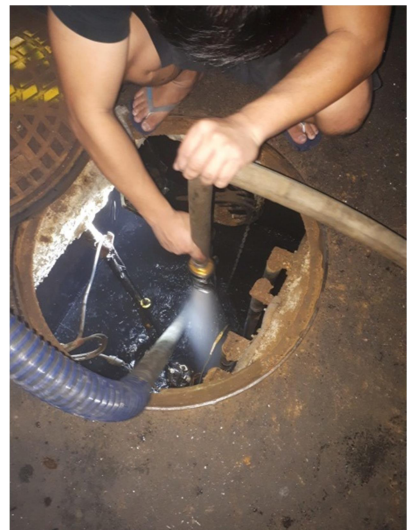
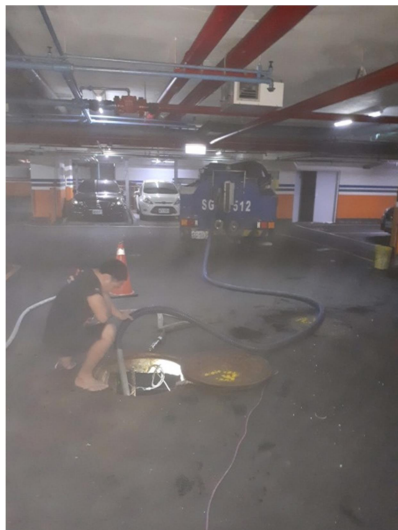
第十一池



第十二池



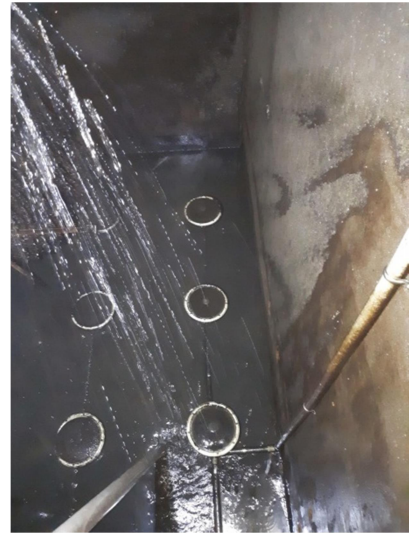
第十三池



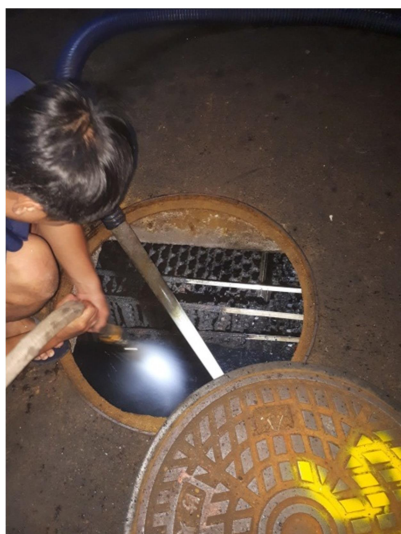
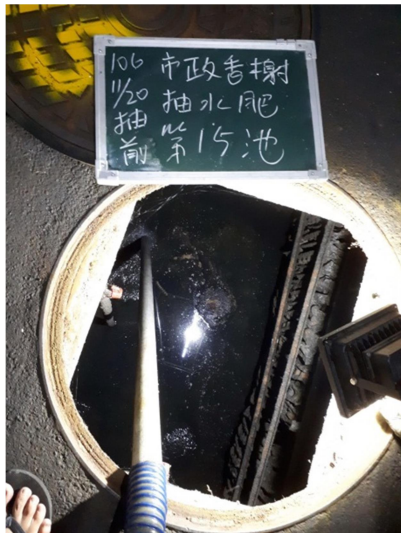


第十四池

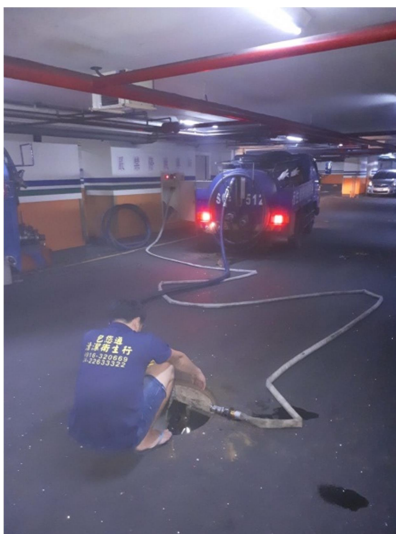




第十五池

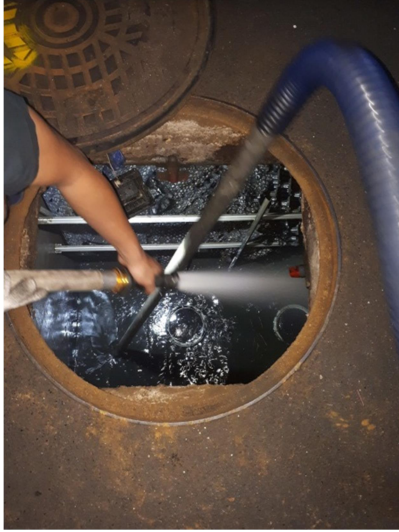


第十六池

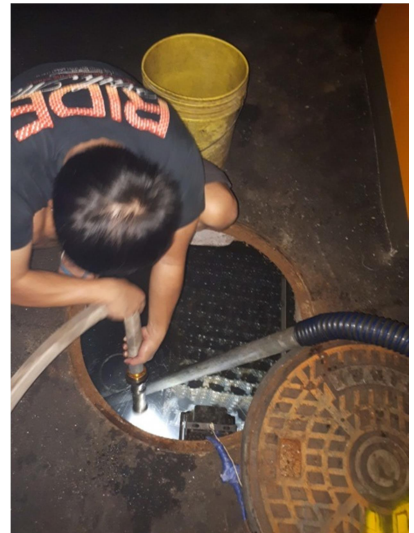
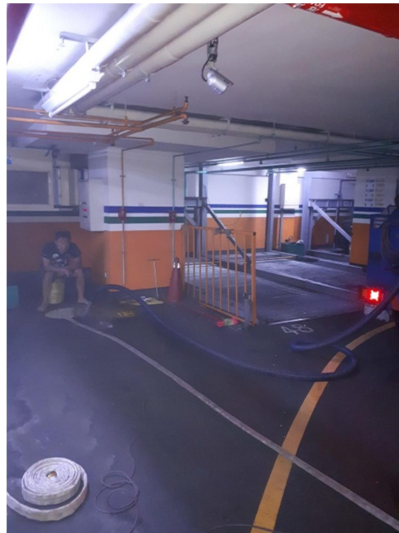


第十七池

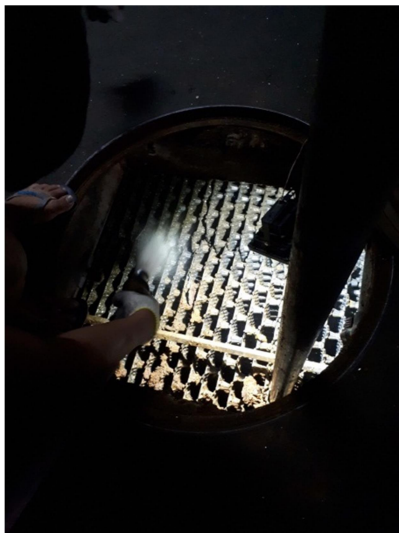
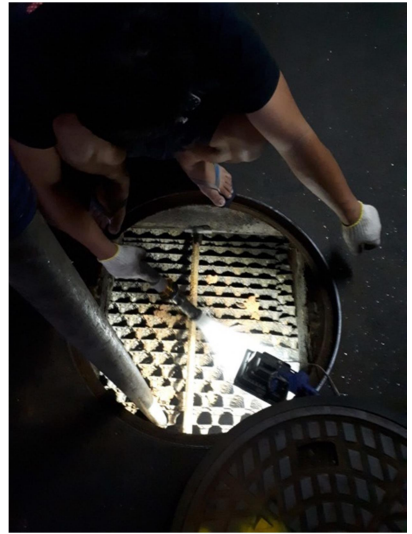
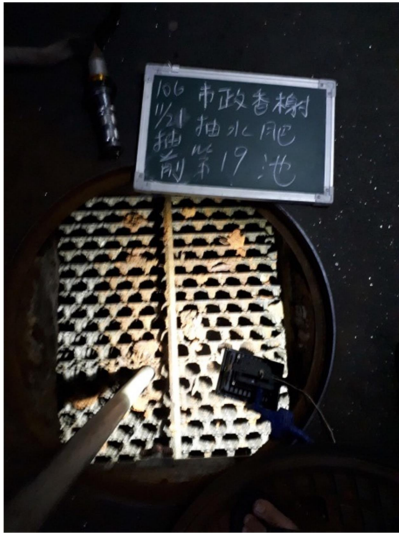




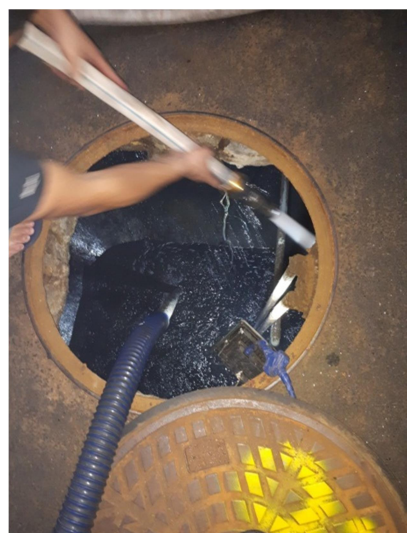
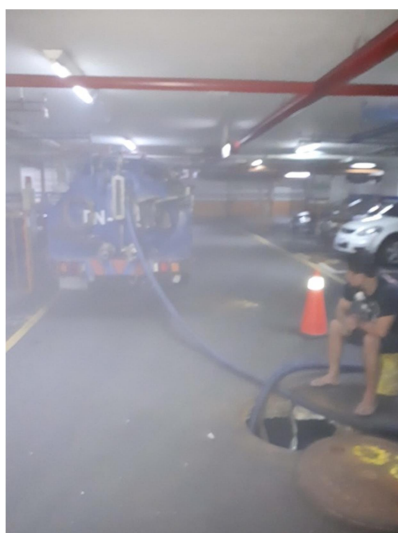
第十八池



第十九池

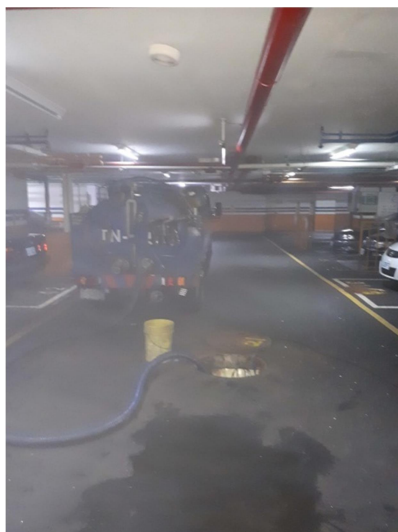


第二十池



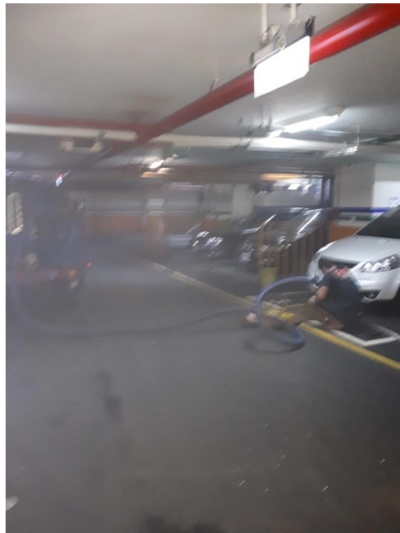


第二十一池



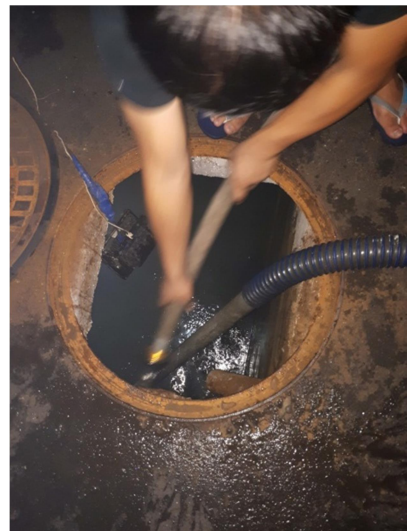
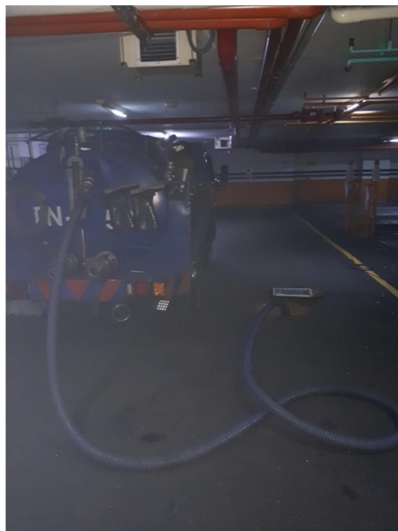


第二十二池





第二十三池



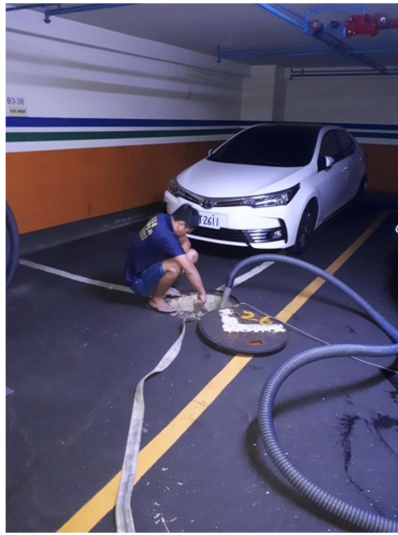
第二十四池



第二十五池



第二十六池



廢水池清池照片 第二十七池~第二十八池





至順工程有限公司